

EasyLog Data Logger Series



Overview

EasyLog model EL-USB series products are a line of low cost, compact, battery-operated data loggers with built-in memory and USB interface. Each product in the line offers a specific measurement function and range (see table below). Features shared by all EasyLog data loggers are:

- Programmable high and low alarm thresholds.
- All data is recorded to built-in, non-volatile memory. EasyLog data loggers do not lose readings when the battery is discharged or replaced.
- Automatic time and date stamping of logged data.
- Program the logger to begin recording immediately, or at a specific date and time.
- Bright, multi-color LEDs indicate status and alarm conditions during logging.
- Built-in USB interface for easy setup using any PC.
- Built-in, replaceable lithium battery (provided).
- Intrinsic isolation for voltage and current measurements.
- Removable cover protects the USB interface.
- Removable clip secures the instrument during transport or deployment.
- EasyLog application software for data logger setup, data download, and analysis.

EasyLog Products for Any Application

From temperature and humidity to carbon monoxide trending, there's an EasyLog data logger that's right for you.

Measurement		Model EL-USB (click on page number to jump to page)																		
Function	Range	-LITE	-1	-1-LCD	-1-RCG	-1-PRO	-2	-2+	-2-LCD	-2-LCD+	-3	-4	-5	-ACT	-CO	-TC	-TC-LCD	-TP-LCD	-TP-LCD+	
Temperature	-10 to +50°C (+14 to +122°F)	3																		
Temperature	-35 to +80°C (-31 to +176°F)		4	5																
Temperature	-20 to +60°C (-4 to +140°F)				6															
High Temperature	-40 to +125°C (-40 to +257°F)					7												19	20	
Humidity, temperature, dew point	0 to 100% RH -35 to +80°C (-31 to +176°F)						8	9	10	11										
Voltage	0 to 30 VDC												12							
Process current	4 to 20 mA												13							
Event, State, Count	3-28 VDC													14						
Current	-1000 to 1000 mV														15					
Carbon monoxide	0 to 1000 ppm															16				
Thermocouple	-130 to +900°C -200 to +1300°C -200 to +350°C																17	18		

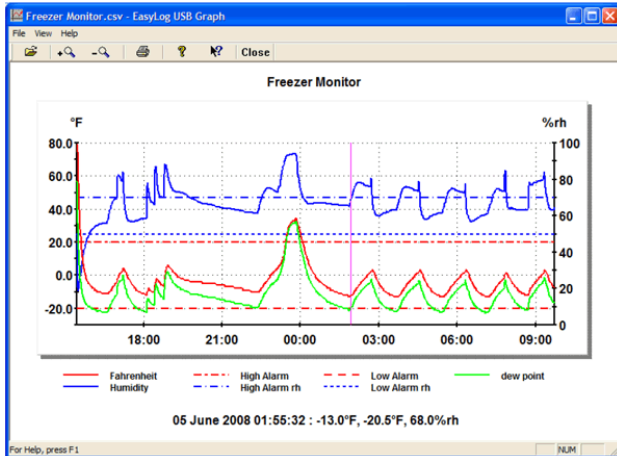
EasyLog Data Loggers

Easy to Program and Deploy

Getting an EasyLogger product ready to acquire data is simple:

1. Remove the protective USB cover (image 1).
2. Plug the instrument into any convenient USB port.
3. Program the data logger with the provided EasyLog software (image 2):
 - Give the logger a unique name (convenient when deploying multiple units).
 - Select the required sample rate.
 - Select high and/or low alarm thresholds.
 - Select the specific date and time to begin logging.

Now remove the data logger from the USB port, replace the USB cover, and deploy the instrument wherever you need it.



	A	B	C	D	E	F	G	H	I
	Freezer Monitor	Time	Fahrenheit(°F)	High Alarm	Low Alarm	Humidity(%rh)	High Alarm rh	Low Alarm rh	dew point(°F)
1	1	4/6/2008 15:26	77	20	-20	50	70	50	56.9
2	2	4/6/2008 15:27	79	20	-20	25.5	70	50	40.7
3	3	4/6/2008 15:28	75	20	-20	20.5	70	50	31.9
4	4	4/6/2008 15:29	66	20	-20	19	70	50	22.6
5	5	4/6/2008 15:30	56	20	-20	20	70	50	15.5
6	6	4/6/2008 15:31	48	20	-20	22	70	50	11.1
7	7	4/6/2008 15:32	40	20	-20	24	70	50	6.2
8	8	4/6/2008 15:33	34	20	-20	25.5	70	50	2.4
9	9	4/6/2008 15:34	28	20	-20	27	70	50	-1.6
10	10	4/6/2008 15:35	24	20	-20	28.5	70	50	-3.9
11	11	4/6/2008 15:36	20	20	-20	30.5	70	50	-6
12	12	4/6/2008 15:37	16	20	-20	32.5	70	50	-8.2
13	13	4/6/2008 15:38	13	20	-20	34	70	50	-10
14	14	4/6/2008 15:39	11	20	-20	35	70	50	-11.2
15	15	4/6/2008 15:40	9	20	-20	37	70	50	-11.9
16	16	4/6/2008 15:41	7	20	-20	38.5	70	50	-12.9
17	17	4/6/2008 15:42	5	20	-20	39.5	70	50	-14.2
18	18	4/6/2008 15:43	4	20	-20	41	70	50	-14.4

Easy to Upload and Analyze Data

Whether you want to review stored data using the supplied application or using Microsoft Excel, getting meaningful results from recorded data is fast and easy:

1. Remove the protective USB cover.
2. Plug the instrument back into the PC's USB port.
3. Use EasyLog software to stop recording, access the instrument's stored data, and save it to a file that you name on the PC, all in one easy operation. The file format is Excel-compatible.
4. Immediately EasyLog's Graph utility is enabled to display all the stored data in one compressed view.
5. A cursor allows you to determine signal magnitude and time and date of acquisition for any value, and a magnifier utility allows you to zoom in for a closer look over any range – Easy and fast.
6. For more custom analysis and report generation, simply import the stored data file to Microsoft Excel for virtually unlimited flexibility in how you view and interpret your results.

EL-USB-LITE Temperature Data Logger



Features

- -10 to +50°C (+14 to +122°F) Measurement Range
- USB Interface for Set-up and Data Download
- 2 User-Programmable Alarm Thresholds
- Bright Red and Green LED Indication
- Replaceable Internal Lithium Battery
- 30-minute fixed sample rate (one sample every 30 min)

Programmable Elements

- Logger Name
- °C, °F
- High and Low Alarms
- Start Date and Start Time

Record Times

Sampling Interval	Record Times
1 sample every 30 minutes	1 month

Ordering Information

Description	Order Number
Temperature Data Logger Includes EL-USB-LITE data logger, software on CD, and battery.	EL-USB-LITE

Specifications

Specification	Minimum	Typical	Maximum	Unit
Measurement Range	-10 (+14)		+50 (+122)	°C (°F)
Internal Resolution		1 (2)		°C (°F)
Accuracy (overall error)			±2.5 (±4.5)	°C (°F)
Logging Rate	every 30 minutes			-
Memory Capacity		4,080		samples
Operating Temperature Range	-10 (+14)		+50 (+122)	°C (°F)
Battery Life	1			Month

EL-USB-1 Temperature Data Logger



Programmable Elements

- Logger Name
- °C, °F
- Logging Rate (10s, 1m, 5m, 30m, 1hr, 6hr, 12hr)
- High and Low Alarms
- Start Date and Start Time

Features

- -35 to +80°C (-31 to +176°F) Measurement Range
- USB Interface for Set-up and Data Download
- 2 User-Programmable Alarm Thresholds
- Bright Red, Green and Orange LED Indication
- Replaceable Internal Lithium Battery
- IP 67 Protection (totally protected against dust; protected against liquid immersion up to 1m)

Record Times

Sampling Interval	Record Times
1 sample every 10 seconds	45 hours
1 sample every minute	11 days
1 sample every 5 minutes	56 days
1 sample every 30 minutes	11 months
1 sample every hour	1.8 years
1 sample every 6 hours	> 2 years
1 sample every 12 hours	> 2 years

Ordering Information

Description	Order Number
Temperature Data Logger Includes EL-USB-1 data logger, software on CD, and battery.	EL-USB-1
Battery Replacement battery.	BAT 3V6
Case Rugged metal alloy design for harsh conditions. Waterproof to IP-67/NEMA-4X	EL-USB-CASE

Specifications

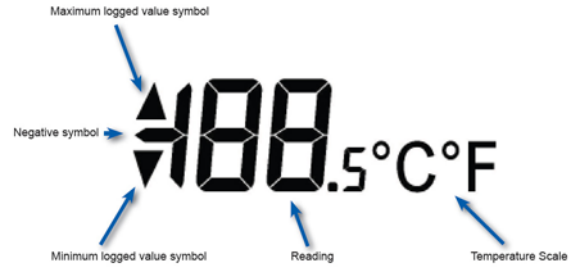
Specification	Minimum	Typical	Maximum	Unit
Measurement Range	-35 (-31)		+80 (176)	°C (°F)
Internal Resolution		0.5 (1)		°C (°F)
Accuracy (overall error)		±1 (±2)		°C (°F)
Logging Rate	every 10s		every 12hr	-
Memory Capacity		16,382		samples
Operating Temperature Range	-35 (-31)		+80 (176)	°C (°F)
Battery Life	1*			Year

*@ 25 °C and 1m logging interval.



EL-USB-CASE

EL-USB-1-LCD Temperature Data Logger



Programmable Elements

- Logger Name
- °C, °F
- Logging Rate (10s, 1m, 5m, 30m, 1hr, 6hr, 12hr)
- High and Low Alarms
- Immediate, delayed and push-to-start logging
- Display off, on for 30 seconds after button press, or permanently on
- Data rollover (Allows unlimited logging periods by overwriting the oldest data when the memory is full)

Features

- -35 to +80°C (-31 to +176°F) Measurement Range
- USB Interface for Set-up and Data Download
- User-Programmable Alarm Thresholds
- High contrast LCD, with two and a half digit temperature and humidity display function
- Immediate, delayed and push-to-start logging
- Status Indication via Red and Green LEDs
- Supplied with Replaceable Internal Lithium Battery
- IP 67 Protection (totally protected against dust; protecte against liquid immersion up to 1m) when cap is fitted.

Record Times

Sampling Interval	Record Times
1 sample every 10 seconds	45 hours
1 sample every minute	11 days
1 sample every 5 minutes	56 days
1 sample every 30 minutes	11 months
1 sample every hour	1.8 years
1 sample every 6 hours	> 2 years
1 sample every 12 hours	> 2 years

Ordering Information

Description	Order Number
Temperature Data Logger Includes EL-USB-1-LC data logger, software on CD, and battery.	EL-USB-1-LCD
Battery Replacement battery.	BAT 3V6

Specifications

Specification	Minimum	Typical	Maximum	Unit
Measurement Range	-35 (-31)		+80 (176)	°C (°F)
Internal Resolution		0.1 (0.2)		°C (°F)
Accuracy (overall error)		±0.5 (±1)	±1.5 (±3)	°C (°F)
Logging Rate	every 10s		every 12hr	-
Memory Capacity		16,378		samples
Operating Temperature Range	-35 (-31)		+80 (176)	°C (°F)
Battery Life	1*			Year

*@ 25 °C and 1m logging interval.

EL-USB-1-RCG Rechargeable Temperature Data Logger



Programmable Elements

- Logger Name
- °C, °F
- Logging Rate (1s, 10s, 1m, 5m, 30m, 1hr, 6hr, 12hr)
- High and Low Alarms
- Start Date and Start Time
- Data Rollover

Features

- -20 to +60°C (-4 to +140°F) Measurement Range
- Stainless Steel (316 grade) case
- Environmental protection to IP67
- Rechargeable lithium-ion battery
- Bi-color status LEDs behind protective glass window
- Mini-USB interface for set-up and data download
- User programmable alarm thresholds
- Immediate and delayed start logging
- Supplied with Windows control software and USB cable

Record Times

Sampling Interval	Record Times
1 sample every second	4.5 hours
1 sample every 10 seconds	45 hours
1 sample every minute	11 days
1 sample every 5 minutes	56 days
1 sample every 30 minutes	11 months
1 sample every hour	1.8 years
1 sample every 6 hours	> 2 years
1 sample every 12 hours	> 2 years

Ordering Information

Description	Order Number
Temperature Data Logger Includes EL-USB-1-RCG data logger, software on CD, and battery.	EL-USB-1-RCG

Specifications

Specification	Minimum	Typical	Maximum	Unit
Measurement Range	-20 (-4)		+60 (+140)	°C (°F)
Internal Resolution		0.1 (0.2)		°C (°F)
Accuracy (overall error)		±1 (±2)		°C (°F)
Logging Rate	every 1s		every 12hr	-
Memory Capacity		16,382		Samples
Operating Temperature Range	-20 (-4)		+60 (+140)	°C (°F)
Recharging Time			5	Hours
Charging Temperature Range	0(+32)	+20(+68)	+45 (+113)	°C (°F)
Battery Life	1*		4**	Weeks

* @ -20°C (-4°F), 1 second logging rate; ** @ 20°C (68°F), 1 minutes logging rate

EL-USB-1-PRO High Temperature Data Logger



Programmable Elements

- Logger Name
- °C, °F
- Logging Rate (1s, 10s, 1m, 5m, 30m, 1hr, 6hr, 12hr)
- High and Low Alarms
- Start Date and Start Time
- Data rollover (FIFO circular recording)

Features

- -40 to +125°C (-40 to +257°F) Measurement Range
- Stainless Steel case
- USB Interface for Set-up and Data Download
- User-Programmable Alarm Thresholds
- Immediate and delayed logging
- Replaceable high capacity internal Lithium Battery
- IP 67 Protection (totally protected against dust; protected against liquid immersion up to 1m)

Record Times

Sampling Interval	Record Times
1 sample every second	9 hours
1 sample every 10 seconds	90 hours
1 sample every minute	22 days
1 sample every 5 minutes	112 days
1 sample every 30 minutes	22 months
1 sample every hour	> 2 years
1 sample every 6 hours	> 2 years
1 sample every 12 hours	> 2 years

Ordering Information

Description	Order Number
Temperature Data Logger Includes EL-USB-1-PRO data logger, software on CD, and battery.	EL-USB-1-PRO
Battery Replacement battery.	BAT 3V6 PRO

Specifications

Specification	Minimum	Typical	Maximum	Unit
Measurement Range	-40 (-40)		+125 (257)	°C (°F)
Internal Resolution		0.1 (0.2)		°C (°F)
Accuracy (overall error)		±0.2 (±0.4)		°C (°F)
Logging Rate	every 1s		every 12hr	-
Memory Capacity		32,510		samples
Operating Temperature Range	-40 (-40)		+125 (257)	°C (°F)
Battery Life		1*		Year

*@ -20°C and 1s logging interval.

EL-USB-2 Humidity, Temperature and Dew Point Data Logger



Programmable Elements

- Logger Name
- °C, °F
- Logging Rate (10s, 1m, 5m, 30m, 1hr, 6hr, 12hr)
- High and Low Alarms for humidity and temperature
- Start Date and Start Time

Record Times

Sampling Interval	Record Times
1 sample every 10 seconds	45 hours
1 sample every minute	11 days
1 sample every 5 minutes	56 days
1 sample every 30 minutes	11 months
1 sample every hour	1.8 years
1 sample every 6 hours	> 2 years
1 sample every 12 hours	> 2 years

Features

- 0 to +100%RH Measurement Range
- -35 to +80°C (-31 to +176°F) Measurement Range
- Dew point automatically calculated from RH and temperature
- USB Interface for Set-up and Data Download
- User-Programmable Alarm Thresholds for %RH & T
- Status Indication via Red and Green LEDs
- Supplied with Replaceable Internal Lithium Battery

Ordering Information

Description	Order Number
RH, Temp, and Dew Point Data Logger Includes EL-USB-2 data logger, software on CD, and battery.	EL-USB-2
Battery Replacement battery.	BAT 3V6

Specifications

	Specification	Minimum	Typical	Maximum	Unit
Relative Humidity	Measurement Range	0		100	%RH
	Humidity Repeatability (short term)		±0.1		%RH
	Accuracy (overall error, 20-80% RH)		±3.0*		%RH
	Internal Resolution		0.5		%RH
	Long-term Stability		0.5		%RH/Yr
Temperature	Measurement Range	-35 (-31)		±80 (±176)	°C (°F)
	Repeatability		±0.1 (±0.2)		°C (°F)
	Accuracy (overall error)		±0.5 (±1)	±2 (±4)	°C (°F)
	Internal Resolution		0.5 (1)		°C (°F)
Dew Point	Accuracy (overall error) (25°C, 40-100%RH)		±1.1 (±2)**		°C (°F)
Logging Rate		every 10s		every 12hr	-
Memory Capacity			16,382		samples
Operating Temperature Range		-35 (-31)		+80 (176)	°C (°F)
Battery Life			1***		Year

* This specifies the overall error in the logged readings, for relative humidity measurements between 20 and 80%RH.

** This specifies the overall error in the calculated dew point, for relative humidity measurements between 40 and 100%RH at 25°C.

*** Depending on sample rate, ambient temperature and use of alarm LEDs

EL-USB-2+ Humidity, Temperature and Dew Point Data Logger



Programmable Elements

- Logger Name
- °C, °F
- Logging Rate (10s, 1m, 5m, 30m, 1hr, 6hr, 12hr)
- High and Low Alarms for humidity and temperature
- Start Date and Start Time
- Data rollover (FIFO circular recording)

Record Times

Sampling Interval	Record Times
1 sample every 10 seconds	45 hours
1 sample every minute	11 days
1 sample every 5 minutes	56 days
1 sample every 30 minutes	11 months
1 sample every hour	1.8 years
1 sample every 6 hours	> 2 years
1 sample every 12 hours	> 2 years

Specifications

	Specification	Minimum	Typical	Maximum	Unit
Relative Humidity	Measurement Range	0		100	%RH
	Humidity Repeatability (short term)		±0.1		%RH
	Accuracy (overall error, 20-80% RH)		±2.0*	±4.0	%RH
	Internal Resolution		0.5		%RH
	Long-term Stability		0.5		%RH/Yr
Temperature	Measurement Range	-35 (-31)		+80 (+176)	°C (°F)
	Repeatability		±0.1 (±0.2)		°C (°F)
	Accuracy (overall error)		±0.3 (±0.6)	±1.5 (±3)	°C (°F)
	Internal Resolution		0.5 (1)		°C (°F)
Dew Point	Accuracy (overall error) (25°C, 40-100%RH)		±1.1 (±2)**		°C (°F)
Logging Rate		every 10s		every 12hr	-
Memory Capacity			16,382		samples
Operating Temperature Range		-35 (-31)		+80 (176)	°C (°F)
Battery Life			1***		Year

* This specifies the overall error in the logged readings, for relative humidity measurements between 20 and 80%RH.

** This specifies the overall error in the calculated dew point, for relative humidity measurements between 40 and 100%RH at 25°C.

*** Depending on sample rate, ambient temperature and use of alarm LEDs

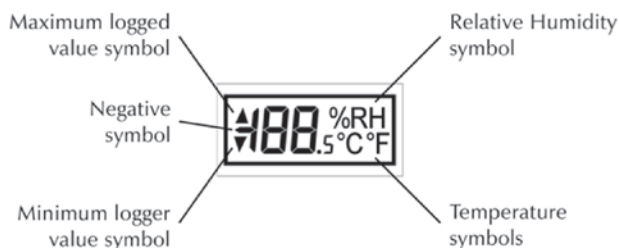
Features

- More accurate than the EL-USB-2
- 0 to +100%RH Measurement Range
- -35 to +80°C (-31 to +176°F) Measurement Range
- Dew point automatically calculated from RH and temperature
- USB Interface for Set-up and Data Download
- User-Programmable Alarm Thresholds for %RH & T
- Status Indication via Red and Green LEDs
- Supplied with Replaceable Internal Lithium Battery

Ordering Information

Description	Order Number
Higher Accuracy RH, Temp, and Dew Point Data Logger Includes EL-USB-2+ data logger, software on CD, and battery.	EL-USB-2+
Battery Replacement battery.	BAT 3V6

EL-USB-2-LCD Humidity, Temperature and Dew Point Data Logger



Programmable Elements

- Logger Name
- °C, °F
- Logging Rate (10s, 1m, 5m, 30m, 1hr, 6hr, 12hr)
- High and Low Alarms
- Immediate, delayed and push-to-start logging
- Display off, on for 30 seconds after button press, or permanently on
- Data rollover (Allows unlimited logging periods by overwriting the oldest data when the memory is full)

Record Times

Sampling Interval	Record Times
1 sample every 10 seconds	45 hours
1 sample every minute	11 days
1 sample every 5 minutes	56 days
1 sample every 30 minutes	11 months
1 sample every hour	1.8 years
1 sample every 6 hours	> 2 years
1 sample every 12 hours	> 2 years

Specifications

	Specification	Minimum	Typical	Maximum	Unit
Relative Humidity	Measurement Range	0		100	%RH
	Humidity Repeatability (short term)		±0.1		%RH
	Accuracy (overall error, 20-80% RH)		±3.0	±6.0	%RH
	Internal Resolution		0.5		%RH
	Long-term Stability		0.5		%RH/Yr
Temperature	Measurement Range	-35 (-31)		+80 (+176)	°C (°F)
	Repeatability		±0.1 (0.2)		°C (°F)
	Accuracy (overall error)		±0.5 (1)	±2 (±4)	°C (°F)
	Internal Resolution		0.5 (1)		°C (°F)
Dew Point	Accuracy (overall error) (25°C, 40-100%RH)		±1.1 (+2)		°C (°F)
Logging Rate		every 10s		every 12hr	-
Memory Capacity			16,382		samples
Operating Temperature Range *		-35 (-31)		+80 (176)	°C (°F)
Battery Life			1**		Year

* At temperatures below -20°C (-4°F) the LCD will exhibit slower response times of approximately 10 seconds.

** Depending on sample rate, ambient temperature and use of alarm LEDs

Features

- 0 to +100%RH Measurement Range
- -35 to +80°C (-31 to +176°F) Measurement Range
- Dew point indication via Windows control software
- USB Interface for Set-up and Data Download
- User-Programmable Alarm Thresholds for %RH & T
- High contrast LCD, with two and a half digit temperature and humidity display function
- Immediate, delayed and push-to-start logging
- Status Indication via Red and Green LEDs
- Supplied with Replaceable Internal Lithium Battery

Ordering Information

Description	Order Number
RH, Temp, and Dew Point Data Logger Includes EL-USB-2-LCD data logger, software on CD, and battery.	EL-USB-2-LCD
Battery Replacement battery.	BAT 3V6

EL-USB-2-LCD+ Humidity, Temperature and Dew Point Data Logger



Programmable Elements

- Logger Name
- °C, °F
- Logging Rate (10s, 1m, 5m, 30m, 1hr, 6hr, 12hr)
- High and Low Alarms
- Immediate, delayed and push-to-start logging
- Display off, on for 30 seconds after button press, or permanently on
- Data rollover (Allows unlimited logging periods by overwriting the oldest data when the memory is full)

Record Times

Sampling Interval	Record Times
1 sample every 10 seconds	45 hours
1 sample every minute	11 days
1 sample every 5 minutes	56 days
1 sample every 30 minutes	11 months
1 sample every hour	1.8 years
1 sample every 6 hours	> 2 years
1 sample every 12 hours	> 2 years

Specifications

Specification		Minimum	Typical	Maximum	Unit
Relative Humidity	Measurement Range	0		100	%RH
	Humidity Repeatability (short term)		±0.1		%RH
	Accuracy (overall error, 20-80% RH)		±2.0*	±4.0	%RH
	Internal Resolution		0.5		%RH
	Long-term Stability		0.5		%RH/Yr
Temperature	Measurement Range	-35 (-31)		+80 (+176)	°C (°F)
	Repeatability		±0.1 (±0.2)		°C (°F)
	Accuracy (overall error)		±0.3 (±0.6)	±1.5 (±3)	°C (°F)
	Internal Resolution		0.5 (1)		°C (°F)
Dew Point	Accuracy (overall error) (25°C, 40-100%RH)		±1.1 (±2)**		°C (°F)
Logging Rate		every 10s		every 12hr	-
Memory Capacity			16,379		samples
Operating Temperature Range		-35 (-31)		+80 (176)	°C (°F)
Battery Life			1***		Year

* This specifies the overall error in the logged readings, for relative humidity measurements between 20 and 80%RH.

** This specifies the overall error in the calculated dew point, for relative humidity measurements between 40 and 100%RH at 25°C.

*** Depending on sample rate, ambient temperature and use of alarm LEDs

Features

- More accurate than the EL-USB-2-LCD
- 0 to +100%RH Measurement Range
- -35 to +80°C (-31 to +176°F) Measurement Range
- Dew point indication via Windows control software
- USB Interface for Set-up and Data Download
- User-Programmable Alarm Thresholds for %RH & T
- High contrast LCD, with two and a half digit temperature and humidity display function
- Immediate, delayed and push-to-start logging
- Status Indication via Red and Green LEDs
- Supplied with Replaceable Internal Lithium Battery

Ordering Information

Description	Order Number
Higher Accuracy RH, Temp, and Dew Point Data Logger with LCD Display Includes EL-USB-2-LCD+ data logger, software on CD, and battery.	EL-USB-2-LCD+
Battery Replacement battery.	BAT 3V6

EL-USB-3 Voltage Data Logger



Programmable Elements

- Logger Name
- Logging Rate (1s, 10s, 1m, 5m, 30m, 1hr, 6hr, 12hr)
- High and Low Alarms
- Start Date and Start Time

Features

- 0-30V d.c. Measurement Range
- Logging Rates between 1s and 12hr
- Stores 32,510 readings
- Connection via two screw terminals
- USB Interface for Set-up and Data Download
- User-Programmable Alarm Thresholds
- Red and Green LED Status Indication
- Replaceable Internal Lithium Battery

Record Times

Sampling Interval	Record Times
1 sample every second	9 hours
1 sample every 10 seconds	90 hours
1 sample every minute	22 days
1 sample every 5 minutes	112 days
1 sample every 30 minutes	22 months
1 sample every hour	> 2 years
1 sample every 6 hours	> 2 years
1 sample every 12 hours	> 2 years

Ordering Information

Description	Order Number
Voltage Data Logger Includes EL-USB-3 data logger, measurement leads, software on CD, and battery.	EL-USB-3
Battery Replacement battery.	BAT 3V6

Specifications

Specification	Minimum	Typical	Maximum	Unit
Measurement Range	0		30	VDC
Internal Resolution		50		mV
Accuracy (overall error)		±1		%
Input Impedance		60		KΩ
Logging Rate	every 1s		every 12hr	-
Memory Size		32,510		Samples
Operating Temperature Range	-25 (-13)		+80 (176)	°C (°F)
Battery Life	1*			Year

*Depending on ambient temperature, logging rate, and use of alarm LED.

EL-USB-4 Current Loop Data Logger



Programmable Elements

- Logger Name
- Logging Rate (1s, 10s, 1m, 5m, 30m, 1hr, 6hr, 12hr)
- High and Low Alarms
- Start Date and Start Time

Features

- 4-20mA Current Loop Measurement Range
- Logging Rates between 1s and 12hr
- Stores 32,000 readings
- Connection via two screw terminals
- USB Interface for Set-up and Data Download
- User-Programmable Alarm Thresholds
- Red and Green LED Status Indication
- Replaceable Internal Lithium Battery

Record Times

Sampling Interval	Record Times
1 sample every second	9 hours
1 sample every 10 seconds	90 hours
1 sample every minute	22 days
1 sample every 5 minutes	112 days
1 sample every 30 minutes	22 months
1 sample every hour	> 2 years
1 sample every 6 hours	> 2 years
1 sample every 12 hours	> 2 years

Ordering Information

Description	Order Number
Current Loop Data Logger Includes EL-USB-4 data logger, measurement leads, software on CD, and battery.	EL-USB-4
Battery Replacement battery.	BAT 3V6

Specifications

Specification	Minimum	Typical	Maximum	Unit
Measurement Range	4		20	mA
Shunt Resistance		110		Ohm
Internal Resolution		0.05		mA
Accuracy (overall error)		±1		% ±1count
Logging Rate	every 1s		every 12hr	-
Memory Size			32,000	samples
Operating Temperature Range	-35 (-31)		+80 (176)	°C (°F)
1/2AA 3.6V Lithium Battery Life	1*			Year

*Depending on ambient temperature, logging rate, and use of alarm LED.

EL-USB-5 Event, State, and Count Data Logger



Features

- Functions as an event, state, and counter logger
- Logging rate of up to five times per second for events, two times per second for state changes and 100 times per second when counting
- Stores up to 32,510 readings in event mode
- Stores up to 32,510 readings in state change mode
- Accepts input voltages of up to 24V
- Volt free contacts option (normally open contact only)
- Rising and falling edge triggering
- LED flash on event / state change
- Connection via two screw terminals
- USB Interface for Set-up and Data Download
- Replaceable Internal Lithium Battery

Programmable Elements

- Logger Name
- Logging Rate (1s, 10s, 1m, 5m, 30m, 1hr, 6hr, 12hr)
- High and Low Alarms
- Start Date and Start Time

Record Times

Sampling Interval	Record Times
1 sample every second	9 hours
1 sample every 10 seconds	90 hours
1 sample every minute	22 days
1 sample every 5 minutes	112 days
1 sample every 30 minutes	22 months
1 sample every hour	> 2 years
1 sample every 6 hours	> 2 years
1 sample every 12 hours	> 2 years

Ordering Information

Description	Order Number
Event, State, Count Data Logger Includes EL-USB-5 data logger, measurement leads, software on CD, and battery.	EL-USB-RCG
Battery Replacement battery.	BAT 3V6

Specifications

Specification	Minimum	Typical	Maximum	Unit
Time between events	200			Milliseconds
Time between state changes	500			Milliseconds
Time between event counts	10			Milliseconds
Input voltage	3		28	V DC
'Volt free contacts' voltage	2.75		3.6	V
'Volt free contacts' current		35		μA
Timing accuracy			±3	seconds per 24 hours
Operating temperature range			+80 (176)	°C (°F)
1/2AA 3.6V Lithium Battery Life	1*			Year

*Depending on ambient temperature, logging rate, and use of alarm LED.

EL-USB-ACT Current Data Logger



Programmable Elements

- Logger Name
- Measurement mode (current, energy, power, voltage)
- Logging Rate (1s, 10s, 1m, 5m, 30m, 1hr, 6hr, 12hr)
- Signal type (a.c. or d.c.)
- Supply voltage (energy monitoring only)
- Cost per kWh (energy monitoring only)
- Scaling factor
- High and Low Alarms
- Start Date and Start Time

Features

- Compatible with AC or DC current clamps, current transformers, and current shunts
- True RMS conversions for AC measurements
- Sample intervals from 1s to 12hrs
- Stores up to 127,000 readings
- USB interface
- Programmable alarms
- High contrast LCD display
- Included EL-Win-USB software for set-up and data analysis
- Powered by replaceable AA batteries (2)

Record Times

Sampling Interval	Record Times
1 sample every second	35 hours
1 sample every 10 seconds	14 days
1 sample every minute	88 days
1 sample every 5 minutes	14 months
1 sample every 30 minutes	> 2 years
1 sample every hour	> 2 years
1 sample every 6 hours	> 2 years
1 sample every 12 hours	> 2 years

Ordering Information

Description	Order Number
EL-USB-ACT Current Data Logger Data logger with USB cable, software on CD, and two (2) AA batteries	EL-USB-ACT

Specifications

Specification	Minimum	Typical	Maximum	Unit
Measurement range (a.c.)	0	-	707	mV a.c. RMS
Equivalent clamp measurement range (a.c.)	0	-	723	A a.c.
Accuracy (a.c.)	-	5	-	% (± 2 count)
Frequency	-	-	100	Hz
Measurement range (d.c.)	-1000	-	1000	mV d.c.
Equivalent clamp measurement range (d.c.)	0	-	1000	A d.c.
Accuracy (d.c.)	-	2	-	% (± 1 count)
Measurement resolution	-	1	-	mV
Display resolution*	1	-	-	mV
Logging rate (Current measurement)	Every 1s	-	Every 12hr	-
Logging rate (Energy measurement)	Every 1s	-	Every 10s	-
Operating temperature range	-10 (-31)	-	+50 (176)	$^{\circ}\text{C}$ ($^{\circ}\text{F}$)
1/2AA 3.6V Lithium Battery Life	-	-	6	Months

* Display resolution will change, depending on the number of digits in use. The display will auto range to make the best use of available space

** Depending on sample rate, ambient temperature and use of LCD

EL-USB-CO Carbon Monoxide Data Logger



PLEASE NOTE: The EL-USB-CO is a professional measuring instrument, designed to record Carbon Monoxide (CO) gas levels for later analysis. It is not an alarm/safety/warning device and should not be used in this capacity.

Programmable Elements

- Logger Name
- Logging Rate (10s, 30s, 1m, 5m)
- Warning Threshold
- Start Date and Start Time

Features

- 0 to 1000 ppm CO measurement range
- Stores up to 32,510 Measurements
- User-Programmable Warning Threshold with Bright Visual and Audible Warning
- USB Interface for Set-up and Data Download
- Expected sensor life: 4 years
- Replaceable Internal Lithium Battery

Record Times

Sampling Interval	Record Times
1 sample every 10 seconds	3.5 days
1 sample every 30 seconds	11 days
1 sample every minute	22 days
1 sample every 5 minutes	3.5 months

Ordering Information

Description	Order Number
Carbon Monoxide Data Logger Includes EL-USB-CO data logger, software on CD, and battery.	EL-USB-CO
Battery Replacement battery.	BAT 3V6

Specifications

Specification	Minimum	Typical	Maximum	Unit
Measurement Range	0		1000	ppm CO
Internal Resolution		0.5		ppm CO
Accuracy (error)		±6		% of reading
Repeatability		±2		% of reading
Decay of reading over time			5	% of reading/year
Expected sensor life		4		years
Response time (to reach 90%)		1		minute
Logging Rate	every 10s		every 5min	-
Memory Capacity			32,510	samples
Operating Temperature Range (15-90%RH, non-condensing)	-10 (14)		+40 (104)	°C (°F)
Operating pressure range	900		1100	mbar
Battery Life			3	month

* with battery supplied, 10 minute logging rate, 25°C ambient temperature, audible warning disabled, reading <10 ppm CO

EL-USB-TC Thermocouple Data Logger



Programmable Elements

- Logger Name
- °C, °F
- Logging Rate (1s, 10s, 1m, 5m, 30m, 1hr, 6hr, 12hr)
- High and Low Alarms
- Start Date and Start Time
- Range of Logging Modes available

Record Times

Sampling Interval	Record Times
1 sample every second	9 hours
1 sample every 10 seconds	90 hours
1 sample every minute	22 days
1 sample every 5 minutes	112 days
1 sample every 30 minutes	22 months
1 sample every hour	> 2 years
1 sample every 6 hours	> 2 years
1 sample every 12 hours	> 2 years

Features

- -200 to +1300°C Measurement Range (K-type)
- -130 to +900°C Measurement Range (J-type)
- -200 to +350°C Measurement Range (T-type)
- USB Interface for Set-up and Data Download
- 2 User-Programmable Alarm Thresholds
- Bright Red and Green LED Indication
- Replaceable Internal Lithium Battery
- Supplied with basic K-type thermocouple rated from 0 to 110°C (32 to 230°F)

Ordering Information

Description	Order Number
Thermocouple Data Logger Includes EL-USB-TC data logger, 1.5m K-type Thermocouple, software on CD, and battery.	EL-USB-TC
Battery Replacement battery.	BAT 3V6

Specifications

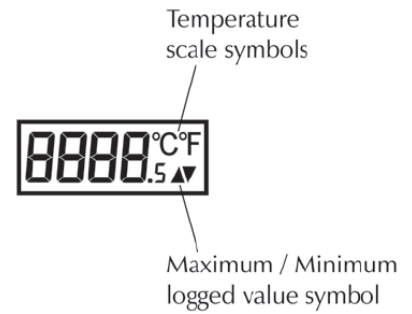
Specification	Minimum	Typical	Maximum	Unit
Measurement range (K-type)	-200 (-328)		+1300 (2372)	°C (°F)
Measurement range (J-type)	-130 (-202)		+900 (1652)	°C (°F)
Measurement range (T-type)	-200 (-328)		+350 (662)	°C (°F)
Resolution (internal and displayed)		0.5 (1)		°C (°F)
Accuracy (logger error)		± 1 (2)**		°C (°F)
Logging Rate	every 1s		every 12hr	-
Memory Capacity		32,000		samples
Operating Temperature Range*	-10 (14)		+40 (104)	°C (°F)
Battery Life***		6		Month

* Using thermocouple sensors, the EL-USB-TC can log temperatures as detailed above, but the data logger should not be subjected to temperatures outside the Operating temperature range.

** EL-USB-TC is designed to be used when disconnected from USB port.

*** @ 25°C and 1m logging rate

EL-USB-TC-LCD Thermocouple Data Logger with LCD Display



Programmable Elements

- Logger Name
- °C, °F
- Logging Rate (1s, 10s, 1m, 5m, 30m, 1hr, 6hr, 12hr)
- High and Low Alarms
- Immediate, delayed and push-to-start logging
- Display off, on for 30 seconds after button press, or permanently on
- Data rollover (Allows unlimited logging periods by overwriting the oldest data when the memory is full)

Record Times

Sampling Interval	Record Times
1 sample every second	9 hours
1 sample every 10 seconds	90 hours
1 sample every minute	22 days
1 sample every 5 minutes	112 days
1 sample every 30 minutes	22 months
1 sample every hour	> 2 years
1 sample every 6 hours	> 2 years
1 sample every 12 hours	> 2 years

Specifications

Specification	Minimum	Typical	Maximum	Unit
Measurement range (K-type)	-200 (-328)		+1300 (2372)	°C (°F)
Measurement range (J-type)	-100 (-148)		+900 (1652)	°C (°F)
Measurement range (T-type)	-200 (-328)		+400 (752)	°C (°F)
Resolution (internal and displayed)		0.5 (1)		°C (°F)
Accuracy (logger error)		± 1 (2)**		°C (°F)
Logging Rate	every 1s		every 12hr	-
Memory Capacity		32,000		samples
Operating Temperature Range*	-10 (14)		+40 (104)	°C (°F)
Battery Life***		6		Month

* Operating temperature applies to the data logger module only.

** Quoted accuracy is for the data logger only and excludes the thermocouple probe.

*** @ 25°C and 1m logging rate and display off

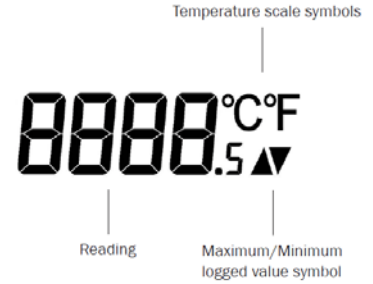
Features

- -200 to +1300°C Measurement Range (K-type)
- -100 to +900°C Measurement Range (J-type)
- -200 to +400°C Measurement Range (T-type)
- High contrast LCD, with four digit temperature display
- USB Interface for Set-up and Data Download
- 2 User-Programmable Alarm Thresholds
- Bright Red and Green LED Indication
- Immediate, delayed and push-to-start logging
- Replaceable Internal Lithium Battery
- Supplied with basic K-type thermocouple rated from 0 to 300°C (32 to 446°F)

Ordering Information

Description	Order Number
Thermocouple Data Logger with LCD Display Includes EL-USB-TC-LCD data logger, 1.5m K-type Thermocouple, software on CD, and battery.	EL-USB-TC-LCD
Battery Replacement battery.	BAT 3V6

EL-USB-TP-LCD Temperature Data Logger



Features

- -40 to +125°C (-40 to +257°F) measurement range
- ±1.5°C (±2.7°F) accuracy
- High contrast LCD display
- Included 1-meter thermistor probe
- USB interface
- Included EL-WIN-USB software for set-up and data analysis
- Programmable alarms with visual alerts
- Included long-life ½AA replaceable lithium battery

Programmable Elements

- Logger Name
- °C, °F
- Logging Rate (1s, 10s, 30s, 1m, 5m, 30m, 1hr, 6hr, 12hr)
- High and Low Alarms
- Start Date and Start Time

Record Times

Sampling Interval	Record Times
1 sample every second	9 hours
1 sample every 10 seconds	3 days
1 sample every 30 seconds	11 days
1 sample every minute	22 days
1 sample every 5 minutes	112 days
1 sample every 30 minutes	677 days
1 sample every hour	> 2 years
1 sample every 6 hours	> 2 years
1 sample every 12 hours	> 2 years

Ordering Information

Description	Order Number
EL-USB-TP-LCD Temperature Data Logger Includes data logger, one (1) battery (preinstalled), one (1) thermistor probe, downloadable configuration, review and Excel export software.	EL-USB-TP-LCD
Battery Replacement battery.	BAT 3V6

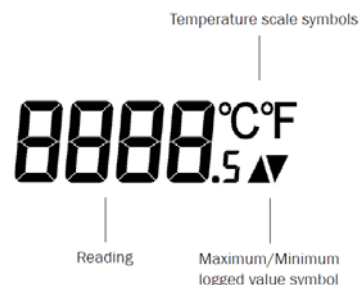
Specifications

Specification	Minimum	Typical	Maximum	Unit
Supplied probe measurement range	-40 (-40)	-	+125 (+257)	°C (°F)
Operating temperature range*	-10 (+14)	-	+40 (+104)	°C (°F)
Resolution (internal and displayed)	-	0.5 (1)	-	°C (°F)
Accuracy (logger error)	-	±1.5 (±2.7)	-	°C (°F)
Logging rate	every 1s	-	every 12 hr	-
Battery life**	-	6**	-	Months

* Operating temperature applies to the data logger unit only.

** Depending on sample rate, ambient temperature and use of LCD.

EL-USB-TP-LCD+ High Accuracy Temperature Data Logger



Features

- -40 to +125°C (-40 to +257°F) measurement range
- $\pm 0.7^{\circ}\text{C}$ ($\pm 1.3^{\circ}\text{F}$) accuracy
- High contrast LCD display
- Included 3-meter thermistor probe
- USB interface
- Included EL-WIN-USB software for set-up and data analysis
- Programmable alarms with visual alerts
- Included long-life 1/2AA replaceable lithium battery

Programmable Elements

- Logger Name
- °C, °F
- Logging Rate (1s, 10s, 30s, 1m, 5m, 30m, 1hr, 6hr, 12hr)
- High and Low Alarms
- Start Date and Start Time

Record Times

Sampling Interval	Record Times
1 sample every second	9 hours
1 sample every 10 seconds	3 days
1 sample every 30 seconds	11 days
1 sample every minute	22 days
1 sample every 5 minutes	112 days
1 sample every 30 minutes	677 days
1 sample every hour	> 2 years
1 sample every 6 hours	> 2 years
1 sample every 12 hours	> 2 years

Ordering Information

Description	Order Number
EL-USB-TP-LCD +Temperature Data Logger Includes data logger, one (1) battery (preinstalled), one (1) thermistor probe, downloadable configuration, review and Excel export software.	EL-USB-TP-LCD+
Battery Replacement battery.	BAT 3V6

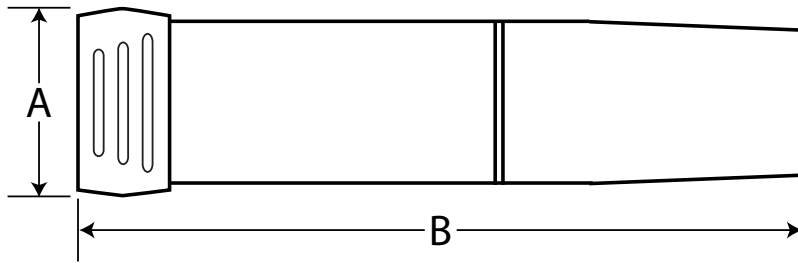
Specifications

Specification	Minimum	Typical	Maximum	Unit
Supplied probe measurement range	-40 (-40)	-	+125 (+257)	°C (°F)
Operating temperature range*	-10 (+14)	-	+40 (+104)	°C (°F)
Resolution (internal and displayed)	-	0.5 (1)	-	°C (°F)
Accuracy	-	± 0.7 (± 1.3)	-	°C (°F)
Logging rate	ever 1s	-	every 12 hr	-
Battery life**	-	6**	-	Months

* Operating temperature applies to the data logger unit only.

** Depending on sample rate, ambient temperature and use of LCD.

Dimensions



Model Number	Dimension in inches (mm)	
	A	B
EL-USB-LITE	0.72 (18.5)	2.67 (68.0)
EL-USB-1	1.02 (25.9)	3.86 (98.0)
EL-USB-1-LCD	1.04 (26.4)	4.7 (119.5)
EL-USB-1-RCG	0.78 (19.8)	3.65 (92.7)
EL-USB-1-PRO	0.69 (17.5)	4.33 (110.0)
EL-USB-2	1.04 (26.4)	4.06 (103.0)
EL-USB-2+	1.04 (26.4)	4.06 (103.0)
EL-USB-2-LCD	1.00 (25.3)	4.96 (126.0)
EL-USB-2-LCD+	1.00 (25.3)	4.96 (126.0)
EL-USB-3	1.06 (26.9)	4.41 (112.0)
EL-USB-4	1.06 (26.9)	4.43 (112.5)
EL-USB-5	1.06 (26.9)	4.43 (112.5)
EL-USB-CO	1.03 (26.2)	4.93 (125.2)
EL-USB-ACT	1.93 (49.0)	5.51 (140.0)
EL-USB-TC	1.06 (26.9)	4.65 (118.1)
EL-USB-TC-LCD	0.9 (23.9)	5.3 (134.5)
EL-USB-TP-LCD	0.94 (23.9)	5.29 (134.5)
EL-USB-TP-LCD+	0.94 (23.9)	5.29 (134.5)

Lascar Data Logger Product Lines

EL-USB Data Loggers



Lascar EasyLog model EL-USB series products are a line of low cost, compact, battery-operated data loggers with built-in memory and a USB interface for easy setup and data download. Each product in the line offers a specific measurement function (including temperature, voltage, process current, and more).

EL-GFX Data Loggers



The EL-GFX line of data loggers is the latest release from Lascar Electronics with similar functionality of the EL-USB series with an added graphic display for data.

EL-WiFi Data Loggers



Lascar's EL-Wifi Data Logger series products are low cost, compact, battery-operated data loggers with wireless connectivity to any PC over a WiFi router. Each product in the line features a large, easy-to-read display of current measurements, and is purchased for specific measurement functions.



DATAQ Instruments, Inc.
241 Springside Drive
Akron, Ohio 44333
Phone: 330-668-1444
Fax: 330-666-5434

Data Acquisition Product Links

(click on text to jump to page)
[Data sition](#) | [Data Logger](#)